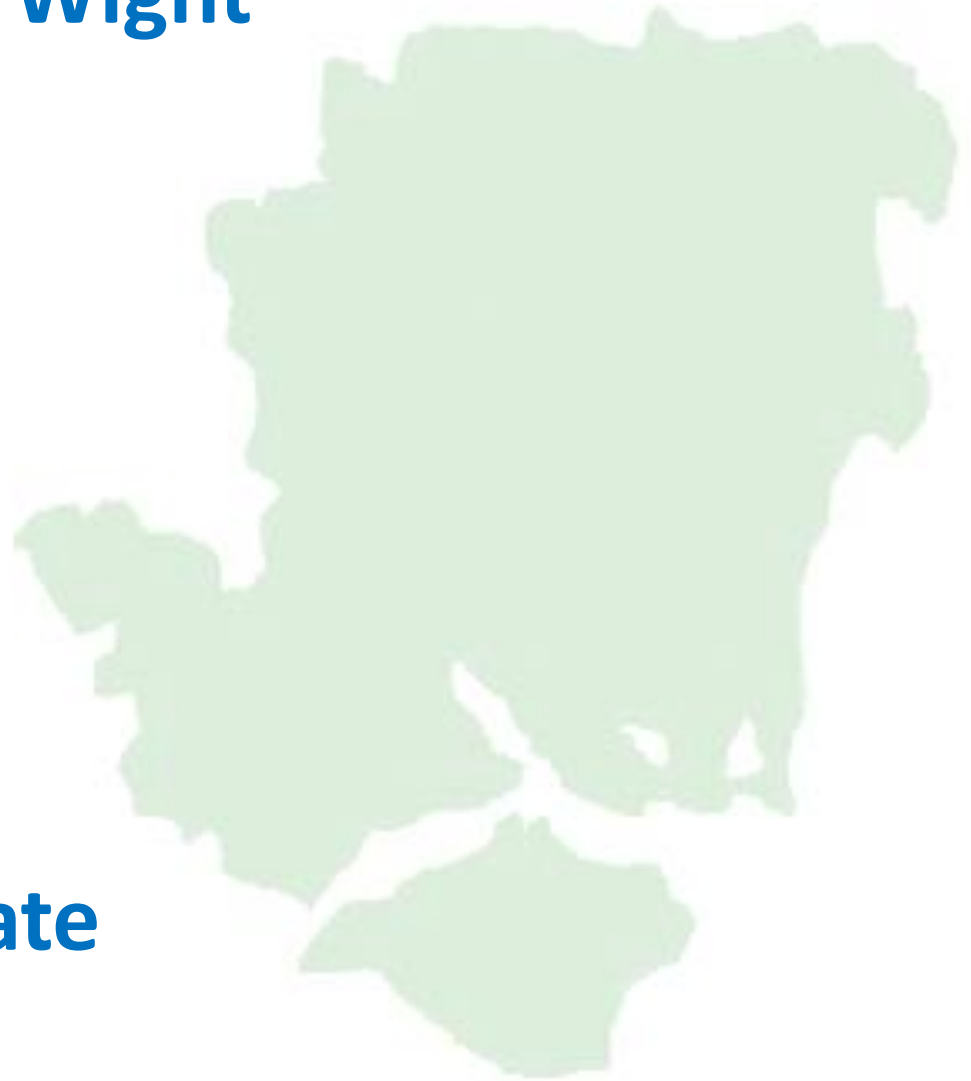


Hampshire and Isle of Wight Sustainability and Transformation Partnership



**Core programme update
June 2017**



Our core delivery programmes

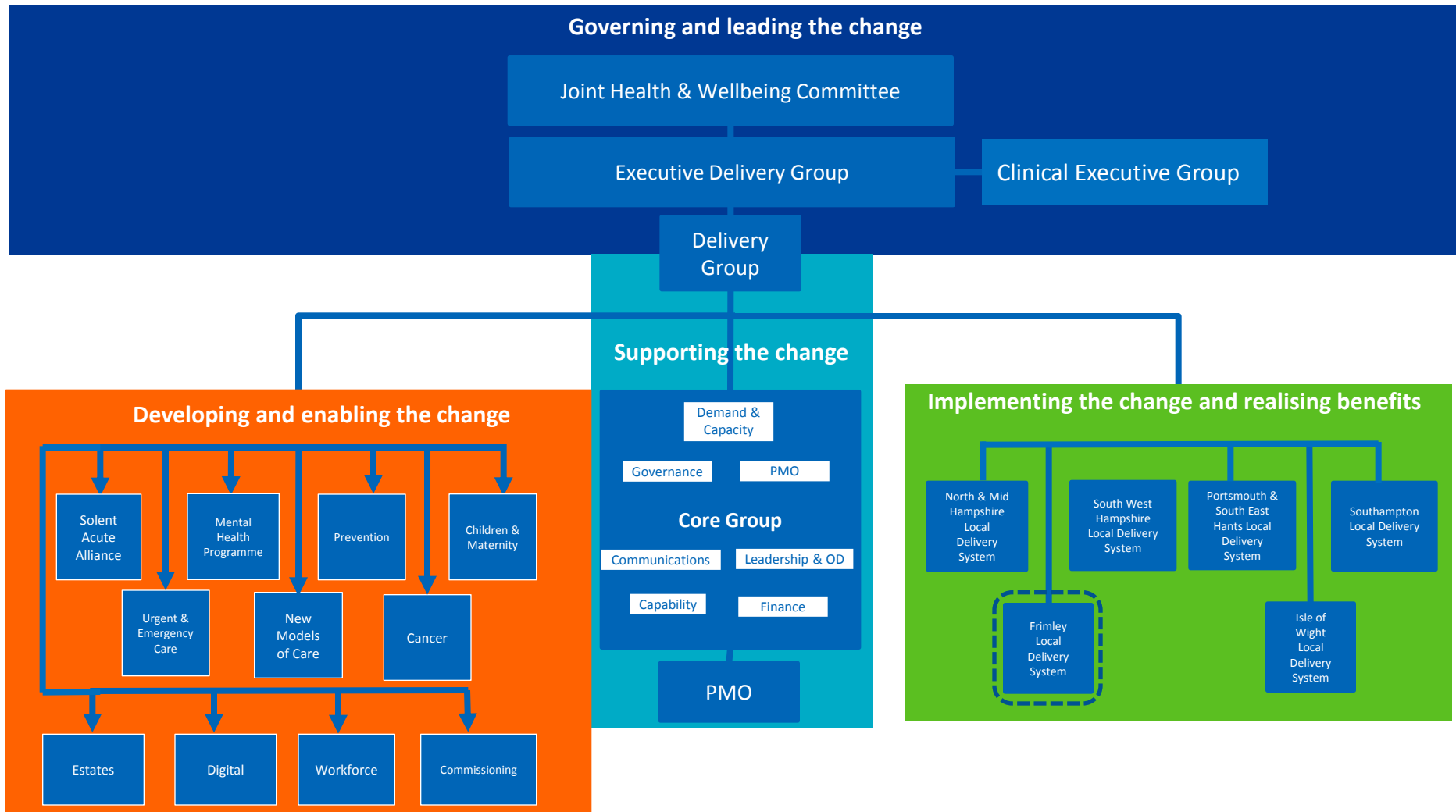
1

This document provides an update on our seven core delivery programmes. Following the publication of NHS England's Five Year Forward View Next Steps the core programmes have been amended to reflect both national and local priorities. There are now seven core programmes focused on transforming the way both physical and mental health and care are delivered.

Core Programme	Summary
1. Prevention at scale	To improve healthy life expectancy and reduce dependency on health and care services through a radical upgrade in prevention, early intervention and self care: a sustained focus on delivering prevention at scale in HIOW.
2. New Care Models	To improve the health, wellbeing and independence of HIOW population through the accelerated introduction of New Models of Care and ensure the sustainability of General Practice within a model of wider integrated health and care. This will be delivered through the Vanguard programmes and local health system New Care Models delivery arrangements.
3. Urgent and Emergency Care	To create a sustainable, high quality and affordable configuration of urgent and emergency services for the population of HIOW and the out-of-hospital services to support that configuration, ensuring that no patient stays longer in an acute or community bed based care than their clinical condition and care programme demands. Focus will include reducing the rate of delayed transfers of care by improving discharge planning and patient flow, and by investing in capacity to care for patients in more appropriate and cost effective settings
4. Solent Acute Alliance	To deliver the highest quality, safe and sustainable acute services to southern Hampshire and the Isle of Wight. To improve outcomes, reduce clinical variation and cost through collaboration between UHS, Portsmouth Hospitals, Isle of Wight Trust and Lymington Hospital. Provide equity of access, highest quality, safe services for the population.
5. Cancer	To improve the prevention and early detection of cancer , ensuring that patient treatment and their experience of that treatment is as good as it can be. We will also work to ensure that people are supported to live with and beyond their cancer diagnosis.
6. Mental Health Programme	To improve quality, capacity and access to MH services in HIOW. Achieved by the four HIOW Trusts providing mental health services (Southern Health, Solent NHST, Sussex Partnership FT and Isle of Wight NHST), commissioners, local authorities, third sector and people who use services, working together in an Alliance to deliver a shared model of care with standardised pathways
7. Children and maternity	To ensure the children and young people of Hampshire and the Isle of Wight have the best start in life, having the access they need to high quality physical and mental health care.

STP governance structure

2



Our core delivery programme activity

3

Core Programme	Progress to date	Objectives for the next six months
1. Prevention at scale	<ul style="list-style-type: none"> Diabetes Prevention Programme now active with additional national funding obtained – 119 people referred in first month in West and North Hants, Fareham and Gosport 'Stop before the op' now actively promoted in all acute trusts 	<ul style="list-style-type: none"> Diabetes Prevention programme to roll out in Southampton and Portsmouth
2. New Care Models	<ul style="list-style-type: none"> Each local area has completed a new care models self assessment to enable a HIOW plan to be developed 	<ul style="list-style-type: none"> Analysis of self-assessments to identify key priorities and resource requirements
3. Urgent and Emergency Care	<ul style="list-style-type: none"> Investing circa £3m capital to support GP streaming in three emergency departments: £855k at Portsmouth Hospitals, £1m at UHS, £969k at Hampshire Hospitals Agreement of a delivery plan including eight key priority areas 	<ul style="list-style-type: none"> Transforming care services in north and mid-Hampshire , options appraisal and preparation for public consultation Development of an enhanced NHS 111 service model including assessment by a clinician and direct booking for out of hours appointments
4. Solent Acute Alliance	<ul style="list-style-type: none"> Contributed to the Acute Services Review, identifying options to provide safe and sustainable services on the Isle of Wight Moved HIOW vascular services to UHS from April 2017 	<ul style="list-style-type: none"> Designing a Wessex Renal service using a 'Hub and Spoke' model Designing spinal surgical services across Alliance partners, supported by commissioners Prioritising further opportunities to achieve benefits in quality, cost and sustainability
5. Cancer	<ul style="list-style-type: none"> Invested £148k additional funding into non-recurrent MRI scan capacity to improve cancer 62 day wait performance 	<ul style="list-style-type: none"> Continued focus on improving achievement of the 62 waiting time standard Improving rehabilitation and recovery services
6. Mental Health Programme	<ul style="list-style-type: none"> Secured £456k non-recurrent revenue for University Hospitals Southampton to provide 24hr psychiatric liaison services Provided immediate resilience and improvement support for Isle of Wight mental health services Commenced process of establishing a specialised mental health and learning disability service for Hampshire and Southampton 	<ul style="list-style-type: none"> Working with 'Building Health Partnerships' to develop plans to work with community and voluntary sector to embed coproduction into HIOW mental health crisis service design
7. Children and maternity	<ul style="list-style-type: none"> Scope of programme agreed including identification of key priorities : improving care for children with ADHD/ Autism, paediatric urgent and emergency care, Tier3/4 CAMHS, paediatric acute bed review 	<ul style="list-style-type: none"> Stakeholder engagement to help shape plans for key priority areas